

Thank you for purchasing Meiji cleaning gun.

Introduction

- Be sure to read this manual carefully before using the product for correct use of it.
- After reading, keep this manual in a convenient place with great care.
- In case this product is loaned or sold to others, be sure this manual accompanies the product.
- If this manual should be lost or damaged, place an order with us or the agent or sales shop for a replacement.
- Parts of the equipment may be changed for improvement of quality, function or safety of the product. In such cases, a part of the contents or illustrations in this manual may not be the same with the actual product.
- If there should be any part of this manual which is not clear or which you feel should be brought to our attention, please consult with the store where you brought the product or the nearest agent or sales shop of the product.



Caution

This mark indicates a potential danger which may result in injury if instruction manual is not followed appropriately or when appropriate attention is not paid beforehand. This also indicates the possibility of serious damage to the product.
Defects arising from mishandling are not covered under warranty.

1. Materials

- The metal area is made of stainless steel, and the O-ring is made of Viton. The flexure joint is made of POM, and the rotary joint is Teflon.
- Operating temperature is between 0°C and 80°C. If you use hot water for the product, wear protective equipment or wrap a thermal insulator over the cleaning gun.

Also, if the operating temperature exceeds 60°C, the lubricant will melt therefore periodical maintenance is required.

2. Equipment to Use

- The product is for tap water. It cannot be used at a vapor-mixing-type mixing valve outlet. If the mixing valve outlet is closed, vapor will flow backward. Install a check valve on the water side and vapor side.

3. Handling

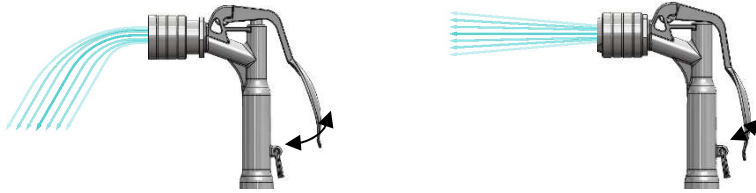
- Dropping the product can cause it to deform or break.
- Do not spray toward people or animals.
- **Do not use the gun above the maximum working pressure (0.69 MPa).**
- To prevent foreign objects from entering the gun, be sure to attach the filter (13) on the back of the body (1). (Pay attention to where you mount the filter.)

4. Other Precautions

- Do not modify the equipment. If you modify the product, it cannot provide sufficient performance. Also, a failure of the machine may result.
- If you find a problem, immediately stop the product, and examine the cause of the problem. Do not use gun until the problem can be solved.

1. Operation Procedure

1. Insert a hose to the hose nipples (8, 19, 24) all the way. Use commercial hardware to attach it tightly.
2. Direct the tip of the nozzle toward the direction you want to spray, and pull the trigger (2).
3. The flow rate changes depending on how much you pull the trigger. Because water pressure varies depending on your region and environment, the spraying pattern may differ.



4. If the adjustable nozzle is mounted, move the slider (14) back and forth to change spraying pattern.



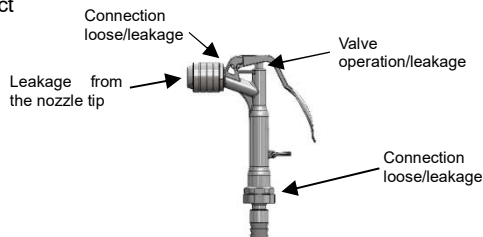
5. You can hold the trigger (2) in place with the ring (7) for continuous spraying. Use this function to fill water into a tank or similar purposes.



2. Maintenance and Inspection

Inspect the gun daily to use it in the best operating condition.

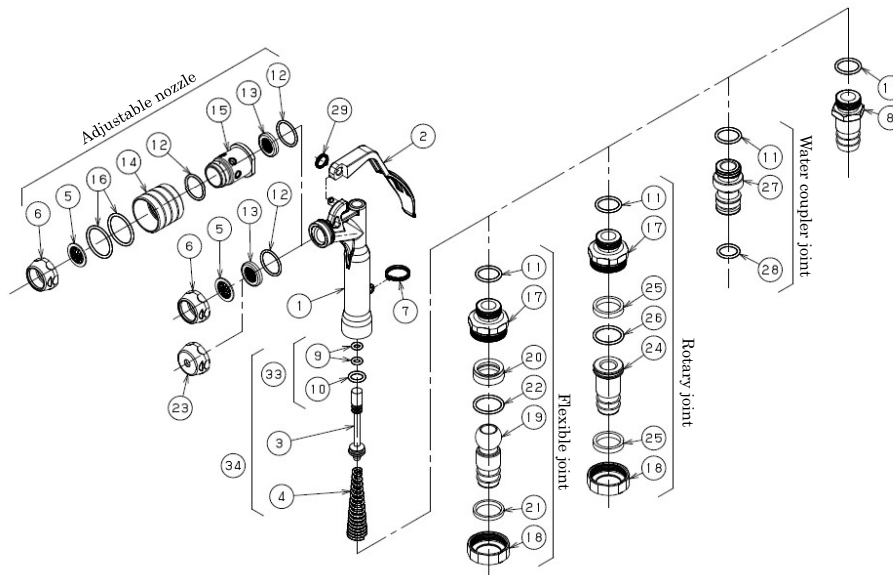
1. Check for looseness and leakage from each area.
2. Points to Inspect



Symptom	Cause	Corrective action
Leakage from the nozzle tip	1. The O-ring P6 (10) is worn or damaged.	1. Replace the O-ring P6 (10).
Connection loose/leakage	1. The connection is loose. 2. The O-ring P14 (11) or S16 (12) is worn or damaged	1. Tighten the connection. 2. Replace O-rings P14 (11) and S16 (12).
Valve malfunction/leakage	1. O-ring P3 (9) or P6 (10) is worn or damaged.	1. Replace O-rings P3 (9) and P6 (10).

3. Change O-rings every six months. Be careful not to damage an O-ring during replacement. Widening an O-ring suddenly may cause it to break, so slowly attach it. (We offer an optionally available jig convenient for changing O-ring P3 (9) on the valve stem (3).)
4. When changing an O-ring, check if it is broken and that it operates normally.
5. If the amount of sprayed water or spraying intensity has decreased, the filter (13) may be clogged. Remove the filter (13) and clean or replace it.

3. List of Components



No.	Name	Material	Qty.	No.	Name	Material	Qty.
1	Body	SUS316L	1	17	Joint top	SUS304	1
2	Trigger	SUS316L	1	18	Joint bottom	SUS304	1
3	Valve stem	SUS304	1	19	Flexible hose joint	SUS304	1
4	Valve spring	SUS316	1	20	Flexible packing 1	POM	1
5	Shower tip	SUS304	1	21	Flexible packing 2	POM	1
6	Nozzle base	SUS304	1	22	O-ring KS12	Viton	1
7	Ring	SUS316	1	23	Straight nozzle	SUS304	1
8	Hose nipple 3/8x1/2	SUS304	1	24	Rotary joint	SUS304	1
9	O-ring P3	Viton	2	25	Rotary packing	PTFE	2
10	O-ring P6	Viton	1	26	O-ring AS568-017	Viton	1
11	O-ring P14	Viton	1	27	Water coupler joint	SUS304	1
12	O-ring S16	Viton	1 (2)	28	O-ring P12	Viton	1
13	Filter	SUS304	1	29	Ring small	SUS316	1
14	Slider	SUS304	1	33	O-ring set	Viton	1
15	Slide base	SUS304	1	34	Valve stem set	-	1
16	O-ring S20	Viton	2				

Maintenance part
(optionally available)

Name	Content
O-ring replacement jig	<p>For replacing the O-ring to the valve stem (3)</p> <p>O-ring</p> <p>Valve stem</p>

4. Parts Replacement

Remove the hose from the gun before replacing parts of the gun.

To repair and inspect the gun, place it in a clean level place, and wear protective goggles. For parts replacement, use specified appropriate tools.

● Replacement of the filter (13)

1. Remove the nozzle base (6) with spanner 21.
2. For the adjustable nozzle, slide the slider (14) forward, and remove the slide base (15) with spanner 21.
3. Attach the filter (13) on the back of the body (1). (Pay attention to where you mount the filter.)

● Replacement of the valve stem (3) and O-ring P3 (9) and P6 (10)

1. Remove the hose nipple (8) with spanner 19.
2. For the flexible joint and rotary joint, remove the joint top (17) with a spanner 25.
3. Pull out the valve spring (4) and valve stem (3) which have been set from the body (1).
4. When removing O-rings P3 (9) and P6 (10) and attaching new ones to the body (1), apply lubricant to O-ring P3 (9) in order to prevent damage.

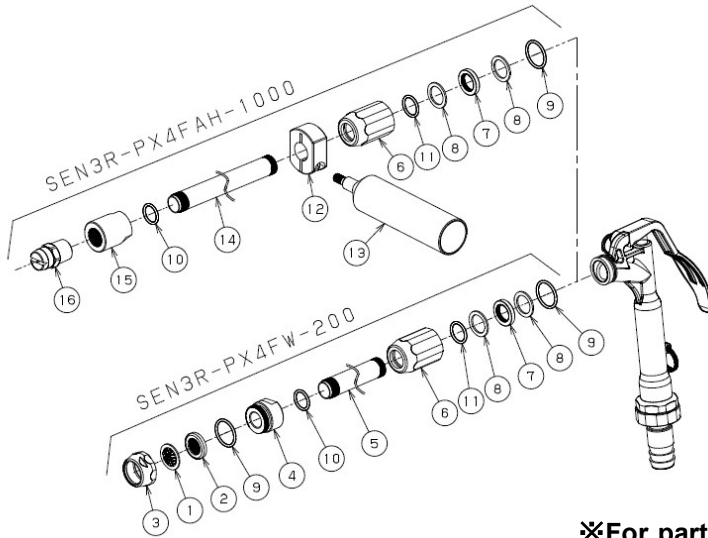
● Replacement of the adjustable nozzle and O-ring S20 (16)

1. Remove the slide base (15) with a spanner 21.
2. Fix the slide base (15) in place with a spanner 21 and remove the nozzle base (6) with a wrench.
3. Remove and replace O-ring S20 (16) in the slider (14).

● Replacement of the flexible joint and O-ring KS12 (22)

1. Remove the joint top (17) with a spanner 25.
2. Fix the joint top (17) in place with a spanner 25 and remove the joint bottom (18) with a spanner 27
3. When replacing O-ring KS12 (22), apply lubricant to prevent damage.

5. List of Components (Extension type)



1 O-ring S16 only in case of SEN3R-PX4FAH-1000

No.	Name	Material	Qty
1	Shower tip	SUS304	1
2	Filter	SUS304	1
3	Nozzle base	SUS304	1
4	Nozzle joint M18	SUS304	1
5	Fluid pipe (200mm)	SUS304	1
6	Pipe nut	SUS304	1
7	Pipe ring	SUS304	1
8	Pipe packing	PTFE	2
9	O-Ring S16	Viton	2(1)
10	O-Ring S11.2	Viton	1
11	O-Ring S12	Viton	1
12	Set locking ring	SUS304	1
13	Handle	SUS304	1
14	Fluid pipe (1000mm)	SUS304	1
15	Nozzle joint 1/4	SUS304	1
16	Wide angle nozzle	SUS303	1

※For parts not listed, please refer to 3.

6. Parts Replacement (Extension type)

Remove the hose from the gun before replacing parts of the gun.

To repair and inspect the gun, place it in a clean level place, and wear protective goggles. For parts replacement, use specified appropriate tools.

● Replacement of O-RING S12, S16

1. Remove Pipe nut (6) by using a wrench 21.
2. Remove and replace O-RING S16 (9).
3. Remove and replace O-RING S12 (11) from Pipe nut (6).

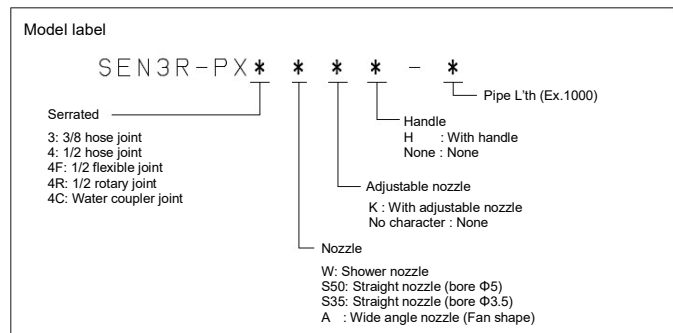
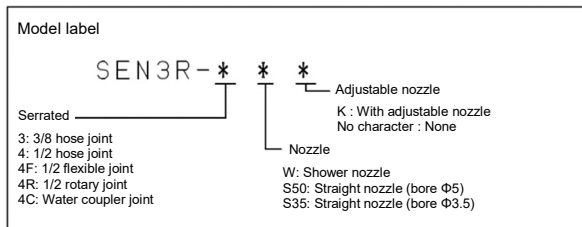
● Replacement of O-RING S11.2

1. Remove Nozzle joint M18 (4) or Nozzle joint 1/4 (15) using a wrench 17 while holding fluid pipe (5 or 14) in place.
2. Remove and replace O-RING S11.2 (10) from Nozzle joint M18 (4) or Nozzle joint 1/4 (15)

7. Specifications

Model	Nozzle	Adjustable nozzle	Joint	Applicable hose	Weight g	Standard water pressure (MPa)	Flow rate (L/min)	
							Direct flow	Jet flow
SEN3R-4W	Shower	N/A	1/2 serrated	1/2 hose (Serrated joint outer diameter φ16 mm)	175	0.3	20	30
SEN3R-4WK		Available			Flexible hose joint			
SEN3R-4FWK			Rotary joint					
SEN3R-4RWK			Water coupler joint		250			
SEN3R-4CWK					225			
SEN3R-PX4FW-200		N/A	Flexible hose joint		-			
SEN3R-PX4FAH-1000	Wide angle	N/A	Flexible hose joint	1/2 hose (Serrated joint outer diameter φ16 mm)	605			

8. Model



2025/01/16 E2025/01/16

